

DESKALERTS MS SQL INSTALLATION AND CONFIGURATION GUIDE

© 2012

www.deskalerts.com

Reproduction of this guide in whole or in part, by any means whatsoever,
is prohibited without the prior written consent of the publisher.

901 N. Pitt Street, Suite 325
Alexandria, VA 22314

CONTENTS

MS SQL Requirements	3
Installation	3
How to enable TCP/IP connections.....	9
Check TCP/IP options	10

MS SQL Requirements

DeskAlerts supports MS SQL 2005 and higher.

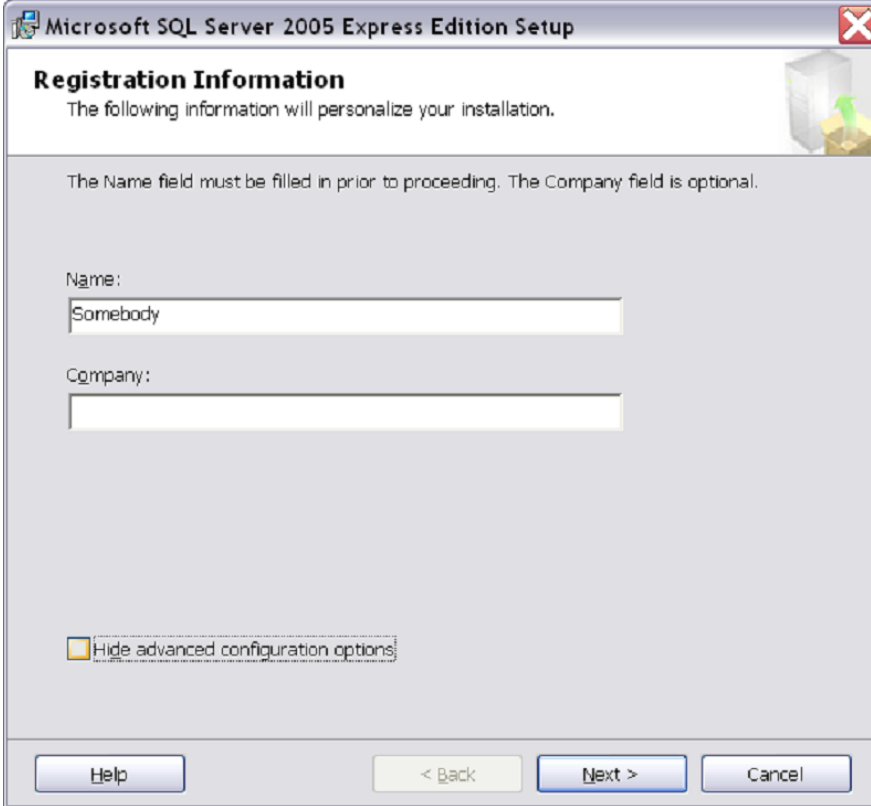
Let's go through the installation and configuration using MS SQL Express 2005 as an example.

Installation

Accept license terms and conditions and click **Next**.



Enter your name and company:



Registration Information

The following information will personalize your installation.

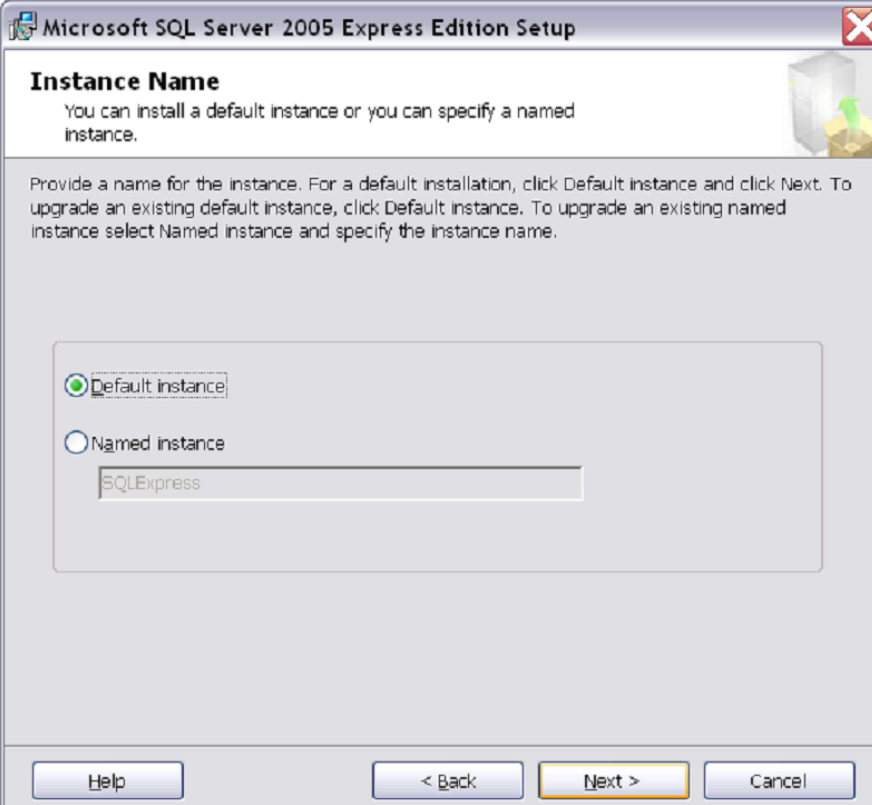
The Name field must be filled in prior to proceeding. The Company field is optional.

Name:

Company:

☐ Hide advanced configuration options

Help < Back Next > Cancel



Instance Name

You can install a default instance or you can specify a named instance.

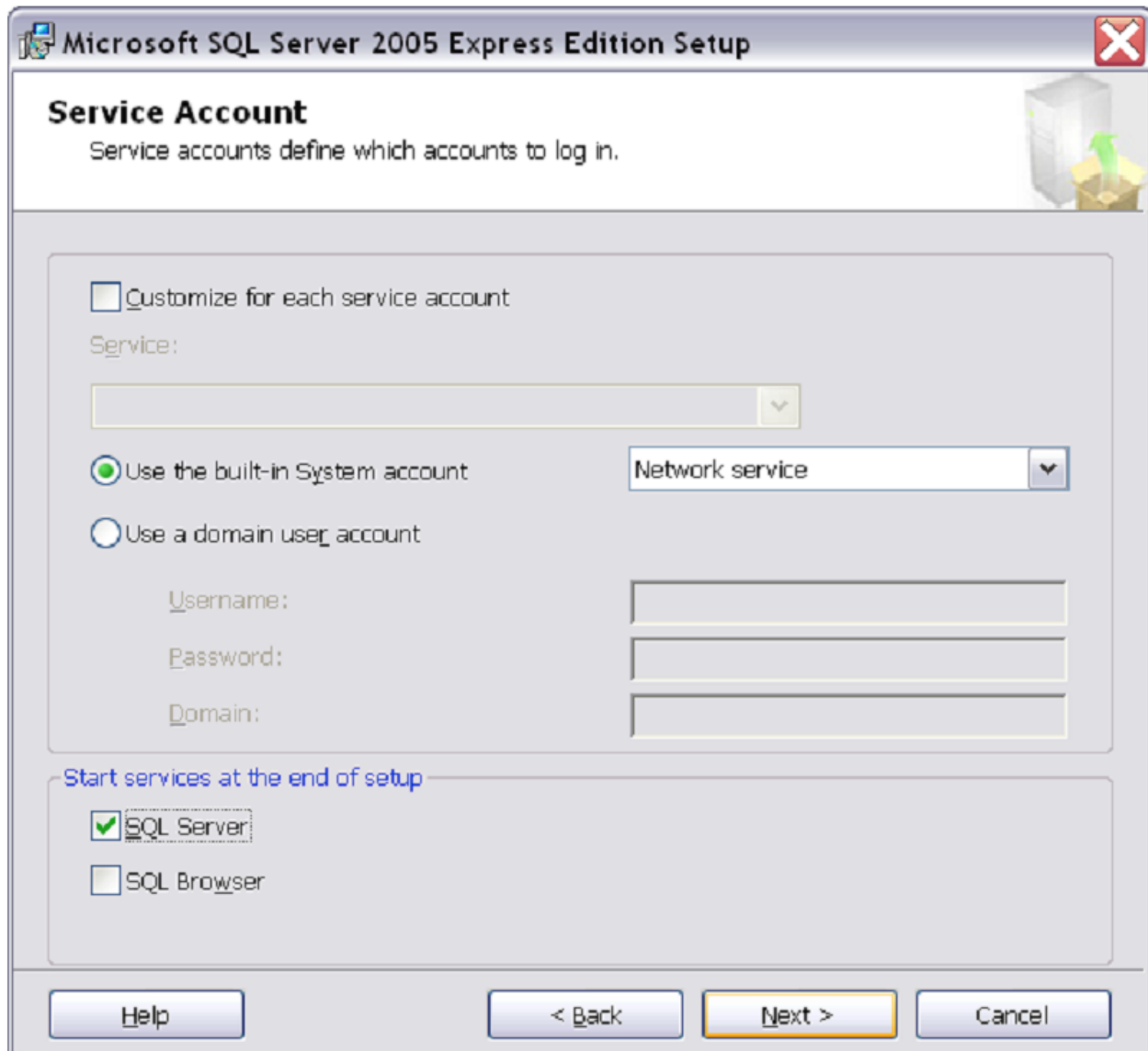
Provide a name for the instance. For a default installation, click Default instance and click Next. To upgrade an existing default instance, click Default instance. To upgrade an existing named instance select Named instance and specify the instance name.

☒ Default instance

☐ Named instance

Help < Back Next > Cancel

Check the settings:



The screenshot shows the 'Service Account' dialog box in the Microsoft SQL Server 2005 Express Edition Setup. The dialog has a title bar with the application icon and the text 'Microsoft SQL Server 2005 Express Edition Setup'. Below the title bar, the section is titled 'Service Account' with a subtitle 'Service accounts define which accounts to log in.' and an icon of a server and a box. The main area contains three radio button options: 'Customize for each service account' (unchecked), 'Use the built-in System account' (selected), and 'Use a domain user account' (unchecked). To the right of the selected option is a dropdown menu showing 'Network service'. Below these are three text boxes labeled 'Username:', 'Password:', and 'Domain:'. At the bottom, there is a section titled 'Start services at the end of setup' with two checkboxes: 'SQL Server' (checked) and 'SQL Browser' (unchecked). The bottom of the dialog features four buttons: 'Help', '< Back', 'Next >', and 'Cancel'.

Microsoft SQL Server 2005 Express Edition Setup

Service Account
Service accounts define which accounts to log in.

☐ Customize for each service account

Service:

☒ Use the built-in System account Network service

☐ Use a domain user account

Username: _____

Password: _____

Domain: _____

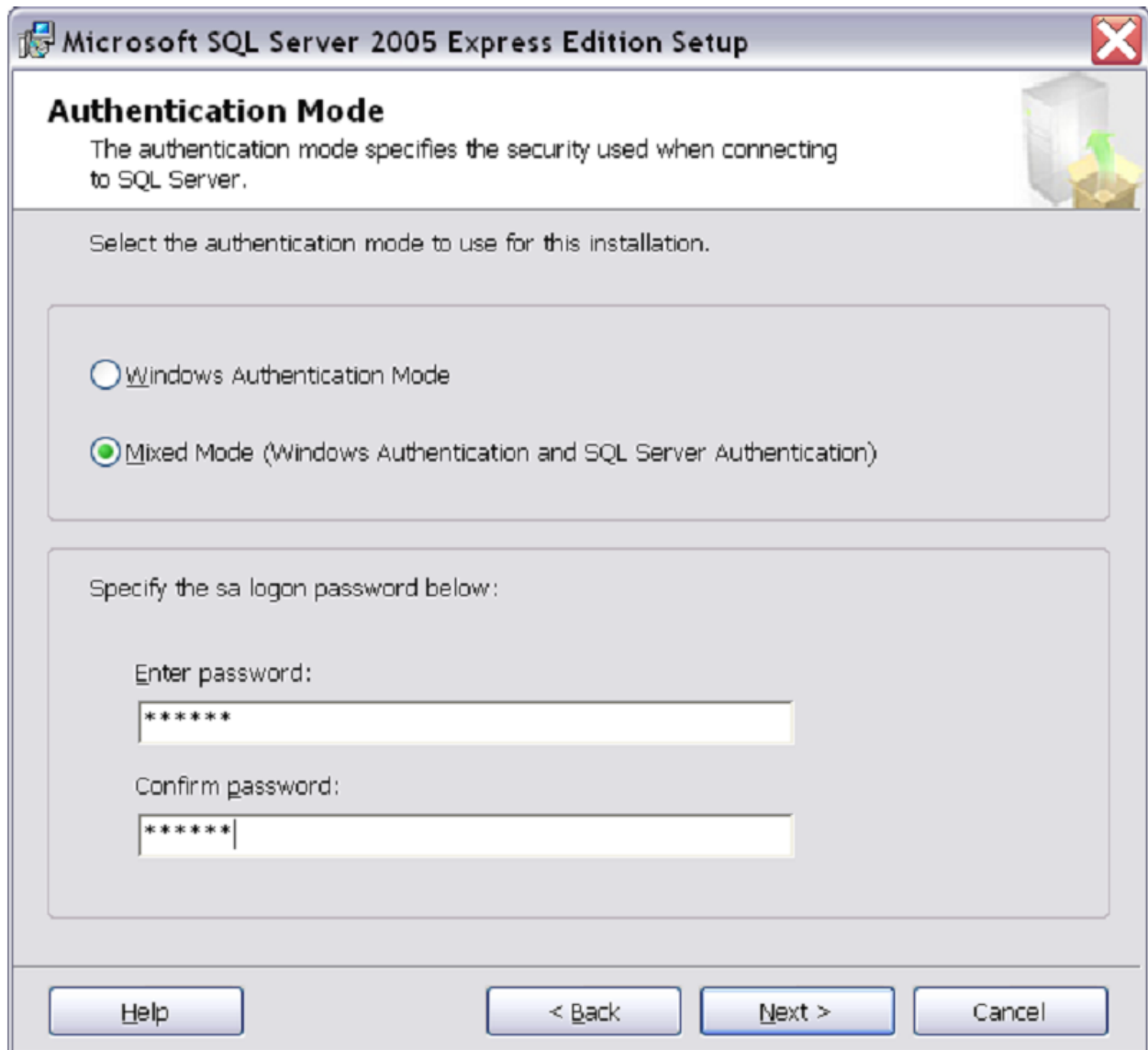
Start services at the end of setup

☒ SQL Server

☐ SQL Browser

Help < Back Next > Cancel

Enter the password for mixed mode:



The screenshot shows the 'Authentication Mode' window of the Microsoft SQL Server 2005 Express Edition Setup. The window title is 'Microsoft SQL Server 2005 Express Edition Setup'. The main heading is 'Authentication Mode'. Below the heading, it says 'The authentication mode specifies the security used when connecting to SQL Server.' and 'Select the authentication mode to use for this installation.' There are two radio button options: 'Windows Authentication Mode' (unselected) and 'Mixed Mode (Windows Authentication and SQL Server Authentication)' (selected). Below these options, it says 'Specify the sa logon password below:'. There are two text input fields: 'Enter password:' and 'Confirm password:'. Both fields contain '*****'. At the bottom, there are four buttons: 'Help', '< Back', 'Next >', and 'Cancel'.

Microsoft SQL Server 2005 Express Edition Setup

Authentication Mode

The authentication mode specifies the security used when connecting to SQL Server.

Select the authentication mode to use for this installation.

☐ Windows Authentication Mode

☒ Mixed Mode (Windows Authentication and SQL Server Authentication)

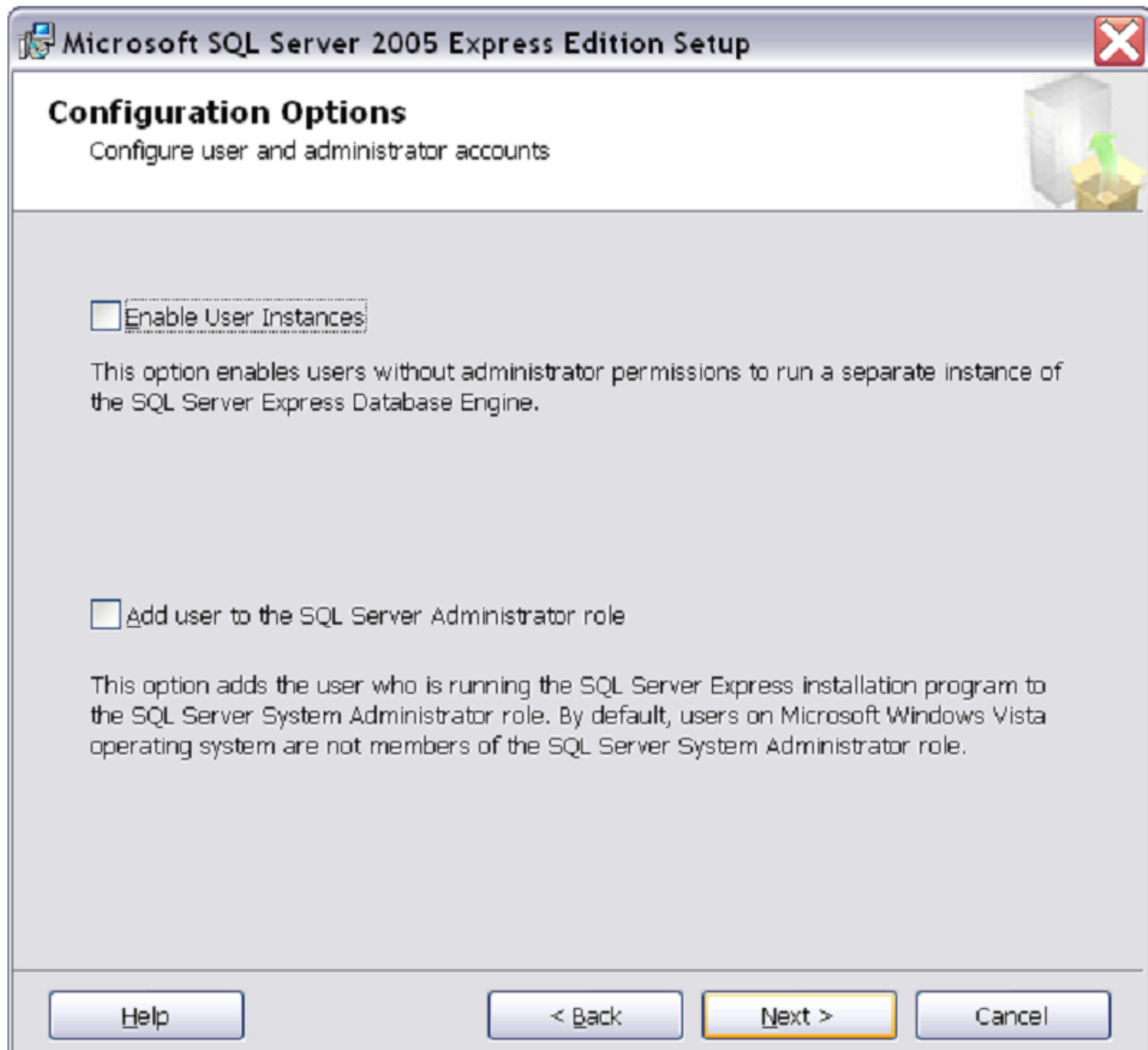
Specify the sa logon password below:

Enter password:

Confirm password:

Help < Back Next > Cancel

Please choose one:



Alerts use TCP/IP connections. On this example you see that it is disabled. **You should enable it.**

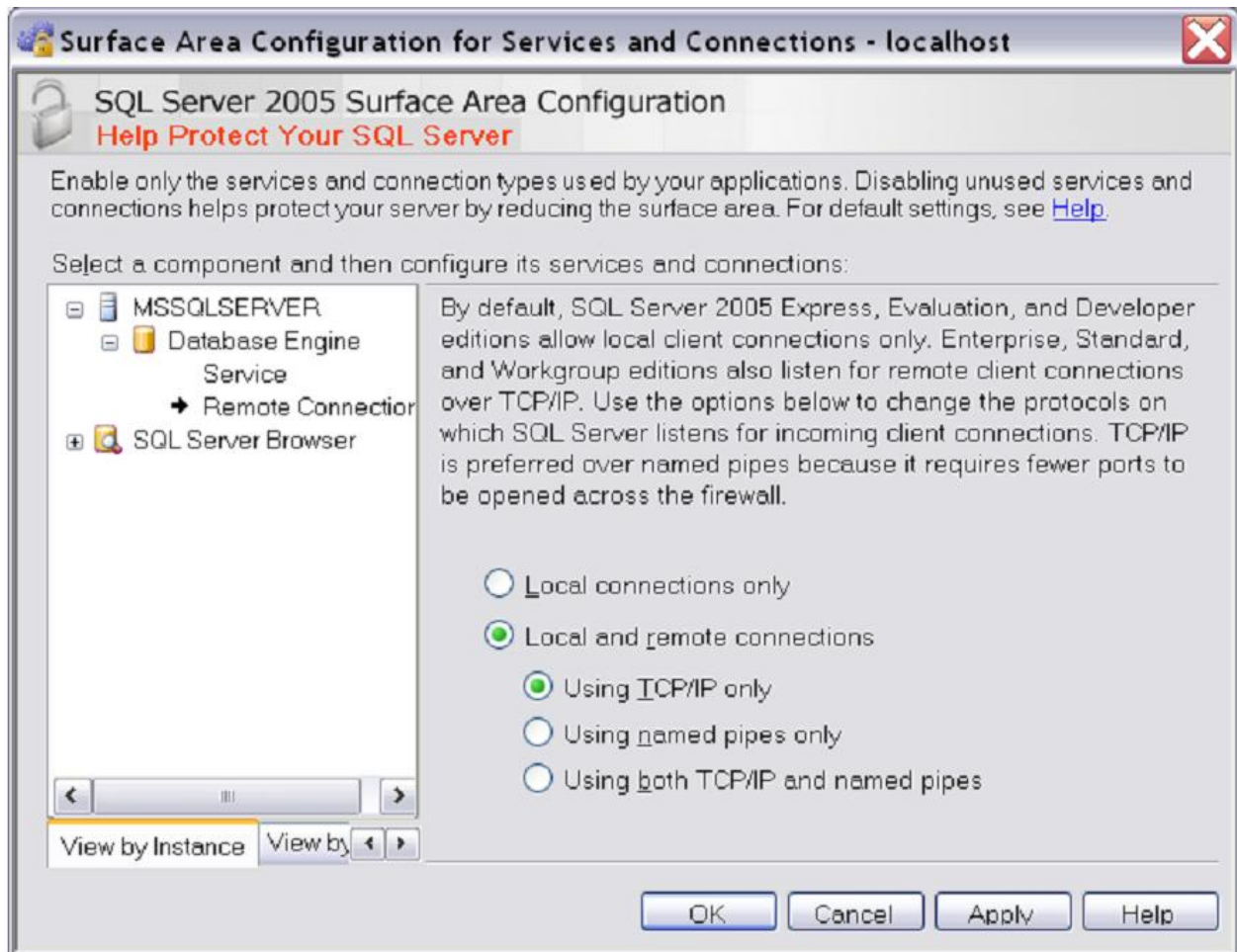


How to enable TCP/IP connections

From the Start Menu, run the “SQL Server Surface Area Configuration” utility.

(Programs->Microsoft SQL Server 2005->Configuration Tools-> SQL Server Surface Area Configuration)

Change the “Remote Connection” option, as shown below:

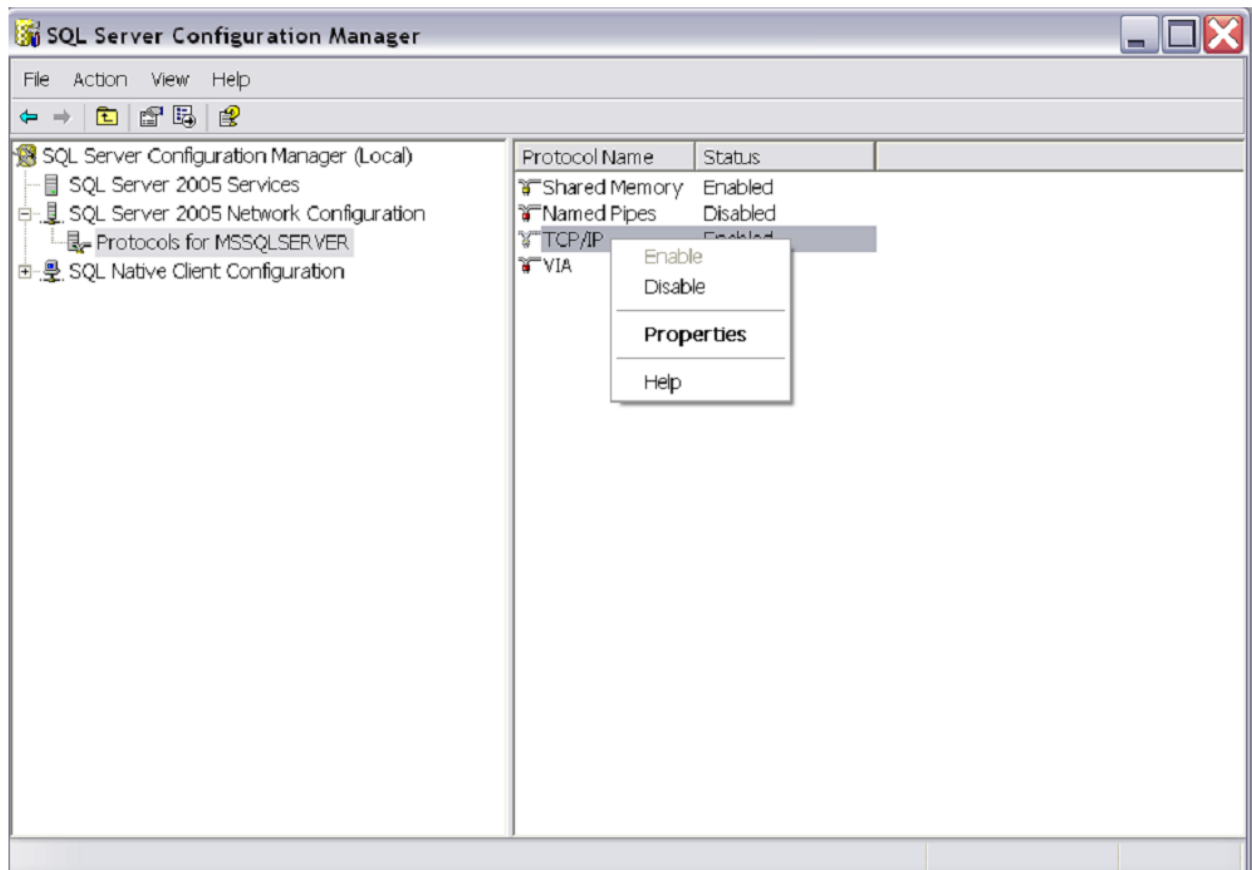


Reboot the computer or restart MSSQL manually.

Check TCP/IP options

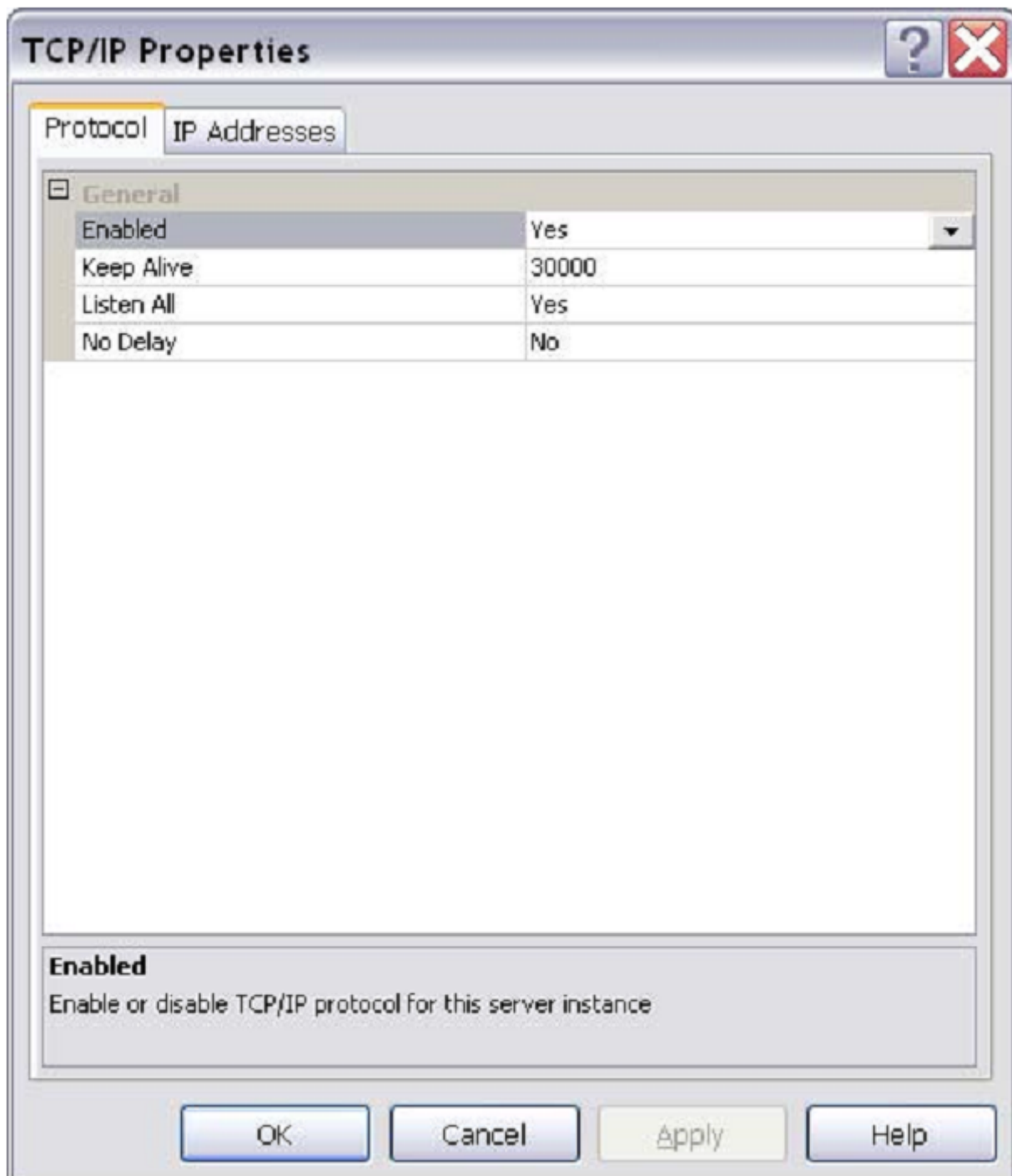
Run "SQL Server Configuration Manager" from start menu.

(Programs->Microsoft SQL Server 2005->Configuration Tools->SQL Server Configuration Manager)




Right-click on TCP/IP, then click on Properties.

Set options similar to screen shown below (replace only IP with yours).



TCP/IP Properties

Protocol | **IP Addresses**

<input checked="" type="checkbox"/> IP1	
Active	Yes
Enabled	Yes 
IP Address	192.168.0.240
TCP Dynamic Ports	
TCP Port	1433
<input checked="" type="checkbox"/> IP2	
Active	Yes
Enabled	No
IP Address	127.0.0.1
TCP Dynamic Ports	
TCP Port	1433
<input checked="" type="checkbox"/> IPAll	
TCP Dynamic Ports	
TCP Port	1433

Enabled
Enable or disable the IP address

OK Cancel Apply Help